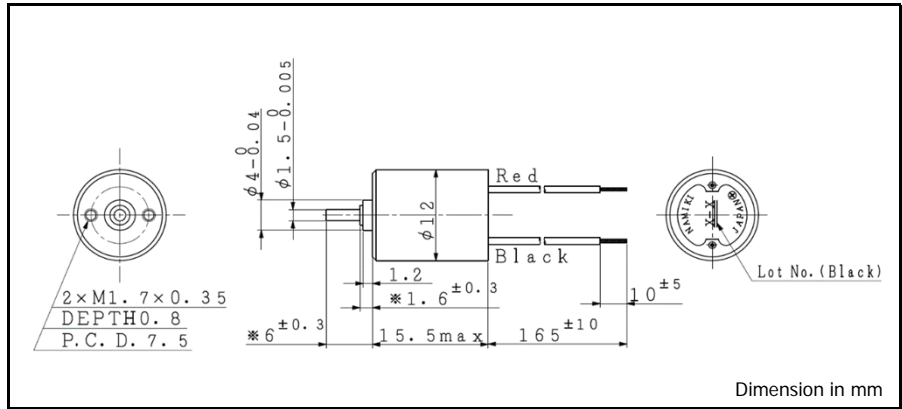
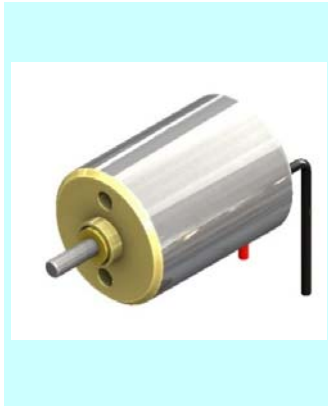


CMS 12-15 $\phi 12$, 0.51 mNm

Precious metal commutation, Sleeve bearing



For combination with gearhead: SSG12, SPG12

Ordering number	CMS12-1506	CMS12-1514	
1 Nominal voltage	7.4	12.0	V
2 Rated torque	0.512	0.509	mNm
3 Rated speed	21400	23100	rpm
4 Rated current	234	155	mA
5 No load speed	25400	27500	rpm
6 No load current	43	29	mA
7 Stall torque	3.27	3.24	mNm
8 Stall current	1.26	0.83	A
9 Output power	2.2	2.3	W
10 Max. efficiency	66	66	%
11 Terminal resistance	5.87	14.40	Ω
12 Friction torque	0.12	0.12	mNm
13 Back-EMF constant	0.281	0.422	mV/rpm
14 Torque constant	2.68	4.03	mNm/A
15 Slope of N-T curve	7771	8477	rpm/mNm
16 Mechanical time constant	16.15	16.70	ms
17 Rotor inertia	0.20	0.19	gcm ²
18 Max. torque	1.64	1.62	mNm

Mechanical data

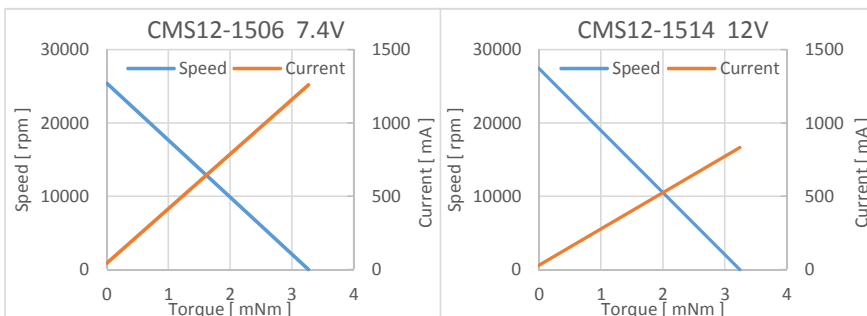
19 Shaft radial play	0.05	mm
20 Shaft axial play	0.03 ~ 0.2	mm
21 Max. shaft radial load	0.03 (5 mm)	N
22 Max. shaft axial load	0.1	N
23 Max. shaft axial load at standstill	4.9	N

Environmental specifications

24 Operating temperature	-20 ~ 60	$^{\circ}\text{C}$
25 Max. coil temperature	80	$^{\circ}\text{C}$

Other specifications

26 Weight	8.9	g
27 Number of segments	5	
28 Bearing type	Sintered sleeve	



V01

Adamant Namiki Precision Jewel Co.,Ltd

TEL: 03-5390-7620 FAX: 03-5390-8082

URL: www.ad-na.com/en/

E-mail: motor-sales@namiki.net

Specifications are subject to change without notice.